

SUBLET

*Plateau 5 1/2  
Parc La Fontaine*



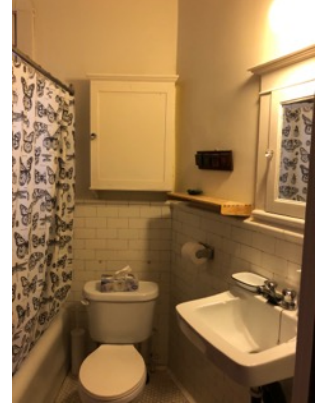
## Lovely 5 1/2 in front of Parc La Fontaine available

Two-bedroom, one bath, completely furnished apartment with a dining room open to the living room and a kitchen with a stove, refrigerator, dishwasher, washing machine, and dryer. Utilities (heat, electricity, and internet) included. This sublet includes all of the appliances and furniture seen in the photos as well as house and bed linens, cookery and dishware.

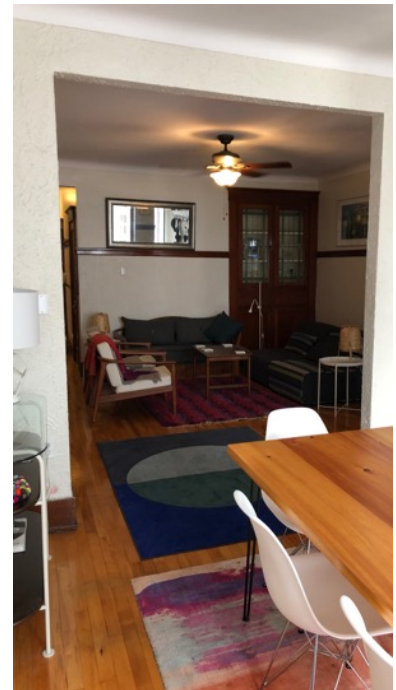
\$1600/month, available from October 2020 – December 2021  
(duration flexible)

[vivecapattison@gmail.com](mailto:vivecapattison@gmail.com)

## *SUBLET: Furnished Plateau 5 1/2*



Each bedroom has a large window and ceiling fans. The back bedroom has a queen-sized bed, built-in shelves, and lots of natural morning light. The middle bedroom has a double bed, a desk with two external monitors and a large closet. The bathroom has a shower with bathtub.



The kitchen includes stove, refrigerator, dishwasher, clothes washer, and dryer with extra space for a table and access to the back balcony. This is a large and ample room with plenty of space to cook. The open living and dining room in the front of the apartment looks out onto Parc La Fontaine and has lovely light at the end of the day. The 45/445 express bus stops in front of the house and is a quick ride to the Papineau Metro (green line) or pick up the 24 bus to the Sherbrooke metro.